

# Product data sheet

## **E 1500 N \***



Spindle drive with slim dimensions for heavy leaves in the façade and roof area

### **AREAS OF APPLICATION**

- Heavy window elements in the façade and roof area
- Natural ventilation, smoke and heat extraction systems
- Inward- and outward opening windows with bottom-hung, top-hung and side-hung leaves as well as roof windows
- Can be used in the exhaust air and air intake
- Installation on wooden, PVC or metal windows

**PRODUCT FEATURES**

- Slim dimensions and an aluminium housing for highest design demands
- Robust and corrosion-resistant design with built-in end position damping
- Syncro drive sets are available for leaf widths over 1200 mm
- Extensive brackets allow versatile installation on main or secondary closing edges
- Synchro set without external control device

**TECHNICAL DATA**

Productname	E 1500 N *
Opening speed RWA	4 mm/s
Opening speed ventilation	4 mm/s
Closing speed (max.)	4 mm/s
Holding force (max.)	5000 N
Compressive force	1600 N
Tensile force	1600 N
Voltage at operation	24 V (+25 % to -20 %)
Operating voltage	24 V DC
Current consumption	1.2 A
Power consumption	29 W
Residual ripple	20 %
Duty rating	30 %
Connector cable length	2.5 m
Special length of connector cable	5 m, 10 m
Min. core cross section	1 mm <sup>2</sup>
Number of cores	3 cores
Service temperature	-5 - 75 °C
IP rating	IP65
protection rating	III
Synchronising function	Yes
Type of additional locking mechanism	Locking drive
Type of stroke shortening	Factory setting
End position cut-off extended	electronic
End position cut-off retracted	electronic
Overload cut-off	Yes
Complete opening within 60 s	yes, up to 300 mm stroke
Number synchronisation drive units	4
KNX ability	No
Bottom-hung window INWARD-opening frame installation	Yes
Bottom-hung window INWARD-opening leaf installation	Yes



Bottom-hung window OUTWARD-opening frame installation	Yes
Side-hung window INWARD-opening frame installation	Yes
Side-hung window INWARD-opening door leaf installation	Yes
Side-hung window OUTWARD-opening frame installation	Yes
Top-hung window INWARD-opening frame installation	Yes
Top-hung window INWARD-opening leaf installation	Yes
Top-hung window OUTWARD-opening frame installation	Yes
OUTWARD-opening roof window	Yes

## VARIANTS / ORDER INFO

Designation	Description	Ident-No.	Colour	Stroke	Operating voltage
GEZE E 1500 N Syncro *	Comprising two drives with integrated synchronous control unit	141936	white RAL 9016	500 mm	24 V
GEZE E 1500 N Syncro *	Comprising two drives with integrated synchronous control unit	141937	according to RAL	500 mm	24 V
GEZE E 1500 N Syncro *	Comprising two drives with integrated synchronous control unit	141935	EV1	500 mm	24 V
GEZE E 1500 N Syncro *	Comprising two drives with integrated synchronous control unit	141920	white RAL 9016	300 mm	24 V
GEZE E 1500 N Syncro *	Comprising two drives with integrated synchronous control unit	141919	EV1	300 mm	24 V
GEZE E 1500 N Syncro	Comprising two drives with integrated synchronous control unit	141939	white RAL 9016	750 mm	24 V
GEZE E 1500 N Syncro *	Comprising two drives with integrated synchronous control unit	141934	according to RAL	400 mm	24 V
GEZE E 1500 N Syncro *	Comprising two drives with integrated synchronous control unit	141942	white RAL 9016	1000 mm	24 V
GEZE E 1500 N Syncro *	Comprising two drives with integrated synchronous control unit	141931	according to RAL	300 mm	24 V
GEZE E 1500 N Syncro	Comprising two drives with integrated synchronous control unit	141933	white RAL 9016	400 mm	24 V
GEZE E 1500 N Syncro *	Comprising two drives with integrated synchronous control unit	141940	according to RAL	750 mm	24 V
GEZE E 1500 N Syncro special version *	Can be configured: Stroke, cable length, colour, Syncro 2-4	141946	EV1		24 V
GEZE E 1500 N Syncro *	Comprising two drives with integrated synchronous control unit	141941	EV1	1000 mm	24 V
GEZE E 1500 N Syncro *	Comprising two drives with integrated synchronous control unit	141932	EV1	400 mm	24 V
GEZE E 1500 N Syncro *	Comprising two drives with integrated synchronous control unit	141938	EV1	750 mm	24 V
GEZE E 1500 N Syncro	Comprising two drives with integrated synchronous control unit	141943	according to RAL	1000 mm	24 V
GEZE E 1500 N Syncro special version *	Can be configured: Stroke, cable length, colour, Syncro 2-4	141947	according to RAL		24 V

Designation	Description	Ident-No.	Colour	Stroke	Operating voltage
E 1500 N special version	Can be configured: Stroke, connector, cable length, colour	141944	EV1		24 V DC
E 1500 N special version	Can be configured: Stroke, connector, cable length, colour	141945	according to RAL		24 V DC
E 1500 N		141916	EV1	1000 mm	24 V DC
E 1500 N		141918	according to RAL	1000 mm	24 V DC
E 1500 N		141917	white RAL 9016	1000 mm	24 V DC
E 1500 N		141894	EV1	300 mm	24 V DC
E 1500 N		141896	according to RAL	300 mm	24 V DC
E 1500 N		141895	white RAL 9016	300 mm	24 V DC
E 1500 N *		141897	EV1	400 mm	24 V DC
E 1500 N		141899	according to RAL	400 mm	24 V DC
E 1500 N		141898	white RAL 9016	400 mm	24 V DC
E 1500 N		141900	EV1	500 mm	24 V DC
E 1500 N		141912	according to RAL	500 mm	24 V DC
E 1500 N		141911	white RAL 9016	500 mm	24 V DC
E 1500 N		141913	EV1	750 mm	24 V DC
E 1500 N		141915	according to RAL	750 mm	24 V DC
E 1500 N		141914	white RAL 9016	750 mm	24 V DC

## ACCESSORIES

### ROOF WINDOW BRACKET H40 E 1500 \*

For installation of the E 1500 N spindle drive



Designation	Ident-No.	Colour
Roof window bracket H40 E 1500 N	121223	according to RAL
Roof window bracket H40 E 1500 N *	121221	silver-coloured
Roof window bracket H40 E 1500 N *	121222	white RAL 9016

**ROOF WINDOW BRACKET H86 E 1500 \***

For installation of the E 1500 N spindle drive



Designation	Ident-No.	Colour
Roof window bracket H86 E 1500 N *	121224	silver-coloured
Roof window bracket H86 E 1500 N	121225	white RAL 9016
Roof window bracket H86 E 1500 N	121226	according to RAL

**LEAF BRACKET E 1500 \***

For roof window installation of the E 1500 N spindle drive



Designation	Ident-No.	Colour
Leaf bracket E 1500 N *	121219	white RAL 9016
Leaf bracket E 1500 N *	121218	silver-coloured
Leaf bracket E 1500 N	121220	according to RAL

**LEAF BRACKET E 1500 FS \***

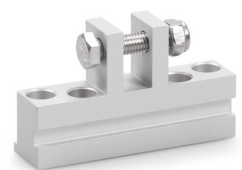
For installation of the E 1500 N spindle drive



Designation	Ident-No.	Colour
Leaf bracket E 1500 N FS *	123085	silver-coloured
Leaf bracket E 1500 N FS	123087	according to RAL
Leaf bracket E 1500 N FS *	123086	white RAL 9016

**LEAF BRACKET E 1500 HSK HE \***

For roof window installation of the E 1500 N, E 250 NT and E 350 N spindle drives



Designation	Description	Ident-No.	Colour
Leaf bracket E 1500 HSK HE *	suitable for installation on the main closing edge of roof windows (Heraol 85 D), can also be used for E 250 NT / E 350 N	136190	EV1

**LEAF BRACKET E 1500 NSK A-HU \***

For roof window installation of the E 1500 N and E 250 NT spindle drives



Designation	Description	Ident-No.	Colour
Leaf bracket E 1500 NSK A-HU *	suitable for installation on the secondary closing edge of roof windows (Alcoa AA 100, Hueck VF 50/60), can also be used for E 250 NT	136189	EV1

**LEAF BRACKET E 1500 NSK HE \***

For roof window installation of the E 1500 N and E 250 NT spindle drives



Designation	Description	Ident-No.	Colour
Leaf bracket E 1500 NSK HE *	suitable for installation on the secondary closing edge of roof windows (Heraol 85 D), also suitable for E 250 NT	136188	EV1

**LEAF BRACKET E 1500 NSK W-HU \***

For roof window installation of the E 1500 N and E 250 NT spindle drives



Designation	Description	Ident-No.	Colour
Leaf bracket E 1500 NSK W-HU *	suitable for installation on the secondary closing edge of roof windows (Wicona WT 50/60, Hueck 85 E), can also be used for E 250 NT	136187	EV1

**LEAF BRACKET E 1500/ E 3000 NSK AP \***

For roof window installation of the E 1500 N, E 1500 S, E 3000 and E 250 NT spindle drives



Designation	Description	Ident-No.	Colour
Leaf bracket E 1500/ E 3000 NSK AP *	suitable for installation on the secondary closing edge of roof windows (Aluprof MB-SR50), can also be used for E 250 NT	140713	EV1

**LEAF BRACKET E 1500/ E 3000 NSK S \***

For installation of the E 1500 N, E 1500 S, E 3000 and E 250 NT spindle drives



Designation	Description	Ident-No.	Colour
Leaf bracket E 1500/ E 3000 NSK S *	suitable for installation on the secondary closing edge of roof windows (Schüco AWS57 RO)	136186	EV1

**CONICAL SLEEVE E 1500 \***

For installation of the E 1500 N spindle drive



Designation	Ident-No.	Colour
E 1500 N conical sleeve *	121216	white RAL 9016
E 1500 N conical sleeve	121217	according to RAL
E 1500 N conical sleeve *	121215	silver-coloured

**BRACKET E 1500 NSK \***

For roof window installation of the E 1500 N spindle drive



Designation	Description	Ident-No.	Colour
Bracket E 1500 NSK *	suitable for installation on the secondary closing edge of roof windows. Supplied by GEZE without conical sleeve ID no. 121215	130524	silver-coloured

**BRACKET E 1500 NSK S-W-HU \***

For roof window installation of the E 1500 N spindle drive



Designation	Description	Ident-No.	Colour
Bracket E 1500 NSK S-W-HU *	suitable for installation on the secondary closing edge of roof windows (Schüco AWS57 RO, Wicona WT 50/60, Hueck VF 50/60). Supplied by GEZE without conical sleeve ID no. 121215	136184	silver-coloured



**BRACKET MOUNT E 1500 \***

For roof window installation of the E 1500 N spindle drive



Designation	Description	Ident-No.	Colour
Bracket mount E 1500 *	suitable for installation on the main closing edge of roof windows	136201	silver-coloured

**SAFETY SCISSORS NO. 35**

For protection of bottom-hung leaves



Designation	Description	Ident-No.	Colour
Safety scissors no. 35	Fix pack available from stock (10 pieces), minimum leaf height 300mm	014499	Galvanised

**SAFETY SCISSORS NO. 60**

For protection of bottom-hung leaves



Designation	Description	Ident-No.	Colour
Safety scissors no. 60	Fix pack available from stock (10 pieces), minimum leaf height 700mm	133814	Galvanised

**GEZE POWER SUPPLY NT 1.5A-24V HS**

24 V power supply for top hat rail mounting



Designation	Description	Ident-No.	Colour	Dimensions	Operating voltage
Power supply NT 1.5 A-24 V HS	Output voltage 24 V DC / W x H x D: 35 x 90 x 58 mm / Installation on top hat rail, 2 division units	151425	black	35 x 90 x 58 mm	230 V AC

**POWER SUPPLY NT 2.5 A-24 V HS \***

24 V power supply for top hat rail mounting



Designation	Description	Ident-No.	Colour	Dimensions	Operating voltage
Power supply NT 2.5 A-24 V HS *	Output voltage 24 V DC / W x H x D: 52 x 90 x 58 mm / Installation on top hat rail, 3 division units	151424	black	52 x 90 x 58 mm	230 V

**POWER SUPPLY NT 6.25 A-24 V HS \***

24 V power supply for top hat rail mounting



Designation	Description	Ident-No.	Colour	Dimensions	Operating voltage
Power supply NT 6.25 A-24 V HS *	Output voltage 24 V DC / W x H x D: 72 x 95 x 66.5 mm / Installation on top hat rail, 4 division units	192113	grey	72 x 95 x 66.5 mm	230 V DC +/- 10%

**POWER SUPPLY NT 1.1 A-24 V UP \***

25 V power supply unit for flush-mounted installation



Designation	Description	Ident-No.	Colour	Supply voltage	Dimensions
Power supply NT 1.1 A-24 V UP	Installation in flush-mounted socket	151426	black	230 V AC	54 x 54 x 32 mm

**NT 2.5 A-24 V SM DIR POWER SUPPLY**

24 V power supply for surface-mounted installation with integrated direction control/polarity reversal



Designation	Description	Ident-No.	Colour	Dimensions	Operating voltage
NT 2.5 A-24 V SM DIR power supply	Output voltage 24 V DC W x H x D: 200 x 50 x 25 mm Surface-mounted installation With integrated direction control/polarity reversal	195293	grey	200 x 50 x 25 mm	230 V AC

\* The products designated above may vary in form, type, characteristics, function, or availability depending on the country. Please get in touch with your GEZE contact person if you have any questions.